

Brooklyn Museum



Contemporary Art

TL2007.32.2

Ghada Amer, Born 1963 in Cairo, Egypt

Heather's Degrade

2006

Embroidery and gel medium on canvas

78 x 62 x 1 1/2 in. (198.1 x 157.5 x 3.8 cm)

Signed in pencil on lower left edge of canvas: "Ghada Amer 06"

Lent by The Arthur M. Sackler Collections



Special Exhibition

EL57.01a-d

Test Piece for Conseils de Beauté du Mois d'Août: Votre Corps, Vos Cheveux, Vos Ongles et Votre Peau (Beauty Tips for the Month of August: Your Body, Your Hair, Your Nails and Your Skin)

1993

Embroidery on 4 cotton handkerchiefs

36 x 48 in. (91.4 x 121.9 cm)

Other (Each): 14 x 14 in. (35.6 x 35.6 cm)

Collection of the artist



Special Exhibition

EL57.02

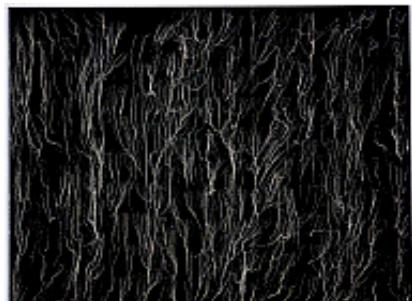
Cendrillon (Cinderella)

1992

Acrylic and embroidery on canvas

24 13/16 x 21 11/16 in. (63 x 55.1 cm)

Collection of Reza Farkhondeh, NYC



Special Exhibition

EL57.03

The Big Black Kansas City Painting - RFGA

2005

Acrylic, embroidery, and gel medium on canvas

108 3/8 x 144 in. (275.3 x 365.8 cm)

Collection of Gagosian Gallery and the Artist

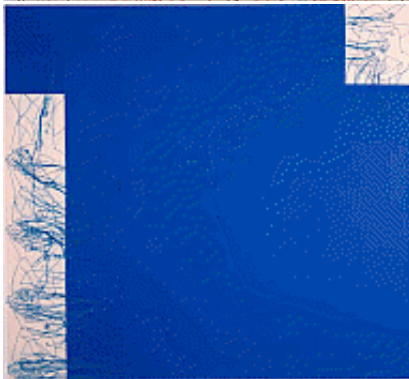
Brooklyn Museum



Special Exhibition
EL57.04

Red Diagonales
2000

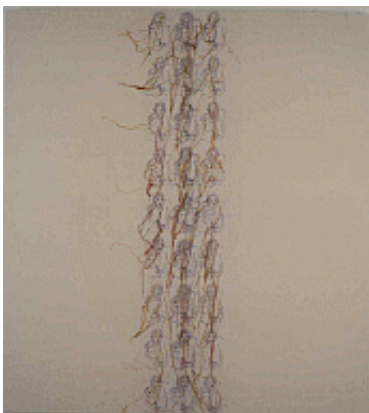
Acrylic, embroidery and gel medium on canvas
72 x 72 in. (182.9 x 182.9 cm)
Collection of Yoko Ono, New York



Special Exhibition
EL57.05

Carre Bleu Avec Deux Bords
1998

Embroidery and acrylic on canvas
46 x 50 in. (116.8 x 127 cm)
Collection of Greg Miller, NYC



Special Exhibition
EL57.06

La Ligne
1996

Embroidery, acrylic and gel medium on canvas
69 11/16 x 64 in. (177 x 162.6 cm)
Collection of Greg Miller, NYC



Special Exhibition
EL57.07

Venus
August 1988 Number 192

Magazine
11 x 8 1/2 in. (27.9 x 21.6 cm)
Collection of the artist

Brooklyn Museum

Special Exhibition
EL57.08

Love Has No End
1990

Plywood, paper, thread, 2 nails
7 3/4 x 19 3/4 x 1/4 in. (19.7 x 50.2 x 0.6 cm)
Other (With Frame): 12 x 24 x 1 1/2 in. (30.5 x 61 x 3.8 cm)
Collection of the artist

Special Exhibition
EL57.09

Venus n. 192: Numero special femmes voilées pour l'été 1988,
Modèle N. 3, Taille 46
1988-1989

Spiral notebook with collage elements: Bristol paper on Canson paper
(closed): 9 1/2 x 9 1/2 in. (24.1 x 24.1 cm)
Collection of the artist

Special Exhibition
EL57.10

Venus n. 192: Numero special femmes voilées pour l'été 1988,
Modèle N. 8, Taille 46
1988-1989

Spiral notebook with collage elements: Bristol paper on Canson paper
(open): 9 1/2 x 19 in. (24.1 x 48.3 cm)
Collection of the artist

Special Exhibition
EL57.11

Venus n. 192: Numero special femmes voilées pour l'été 1988,
Modèle N. 32, Taille 46
1988-1989

Spiral notebook with collage elements: Bristol paper on Canson paper
(open): 9 1/2 x 19 in. (24.1 x 48.3 cm)
Collection of the artist

Brooklyn Museum



Special Exhibition
EL57.12

Untitled
1990

Tracing paper, thread, canvas, and plywood
57 x 51 in. (144.8 x 129.5 cm)
Other (Mounted): 55 x 64 1/2 in. (139.7 x 163.8 cm)
Collection of the artist



Special Exhibition
EL57.13

Untitled
1990

Tracing paper, thread, canvas, and plywood
62 1/2 x 51 in. (158.8 x 129.5 cm)
Other (Mounted): 64 1/2 x 55 in. (163.8 x 139.7 cm)
Collection of the artist



Special Exhibition
EL57.14

Les Anges
1991

Canvas on canvas, and rabbit glue
43 x 57 13/16 in. (109.2 x 146.8 cm)
Collection of the artist



Special Exhibition
EL57.15

Untitled
1991

Canvas on canvas with thread and rabbit glue
13 3/4 x 10 5/8 in. (34.9 x 26.9 cm)
Collection of the artist

Brooklyn Museum



Special Exhibition
EL57.16

La Femme qui Repasse
1992

Acrylic and embroidery on canvas
33 1/2 x 39 3/8 in. (85.1 x 100.1 cm)
Collection of the artist

Special Exhibition
EL57.17

Cinq Femmes au Travail (diptych)
1991

Colored pencil on paper
Framed: 16 1/4 x 14 3/4 in. (41.3 x 37.5 cm)
Collection of the artist

Special Exhibition
EL57.18

Cinq Femmes au Travail (diptych)
1991

Colored pencil on paper
Framed: 16 1/4 x 14 3/4 in. (41.3 x 37.5 cm)
Collection of the artist



Special Exhibition
EL57.19a-b

Barbie Loves Ken, Ken Loves Barbie
1995-2002

Embroidery on cotton
Other (Each): 70 7/8 x 27 9/16 x 4 in. (180 x 70 x 10.2 cm)
Collection of the artist

Brooklyn Museum



Special Exhibition
EL57.20

Pain
2006

Embroidery and gel medium on canvas
60 x 50 in. (152.4 x 127 cm)
Collection of the artist



Special Exhibition
EL57.21

Snow White's Stepmothers (from Breathe Into Me series)
2005

Embroidery and ink on paper
Framed: 28 1/2 x 22 in. (72.4 x 55.9 cm)
Collection of the artist



Special Exhibition
EL57.22

Princesses (from Breathe Into Me series)
2003-2005

Ink crayon and embroidery on paper
Framed: 28 1/2 x 22 in. (72.4 x 55.9 cm)
Collection of the artist



Special Exhibition
EL57.23

Alice (from Breathe Into Me series)
2003

Acrylic and embroidery on paper
Framed: 22 x 28 in. (55.9 x 71.1 cm)
Collection of the artist

Brooklyn Museum



Special Exhibition
EL57.24

Black Flower with Red marks (from Ghada's Group)
2001

Colored pencil and embroidery on monoprint
Other (Framed): 22 x 28 in. (55.9 x 71.1 cm)
Collection of the artist



Special Exhibition
EL57.25

Untitled (Nous Deux)
1991

Colored pencil on paper
Framed: 8 5/16 x 11 11/16 in. (21.1 x 29.7 cm)
Collection of the artist



Special Exhibition
EL57.26

Untitled (The Happy End)
1991

Colored pencil on paper
Framed: 29 11/16 x 21 in. (75.4 x 53.3 cm)
Collection of the artist

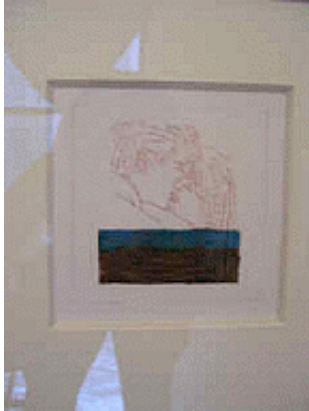


Special Exhibition
EL57.27

Untitled (Couple with Colored Flowers)
1992

Colored pencil on paper
Framed: 32 x 24 in. (81.3 x 61 cm)
Collection of the artist

Brooklyn Museum



Special Exhibition
EL57.28

Untitled (Le Baiser Avec Paysage)
1992

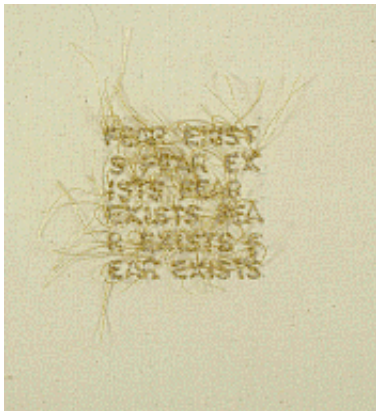
Colored pencil on paper
Framed: 29 11/16 x 21 in. (75.4 x 53.3 cm)
Collection of the artist



Special Exhibition
EL57.31

And the Beast
2004

Acrylic, embroidery and gel medium on canvas
66 x 79 in. (167.6 x 200.7 cm)
Collection of the artist



Special Exhibition
EL57.32

Fear Exists
1996

Embroidery on canvas
Unframed: 2 13/16 x 2 13/16 in. (7.1 x 7.1 cm)
Other (Framed): 14 1/4 x 19 1/4 in. (36.2 x 48.9 cm)
Collection of the artist

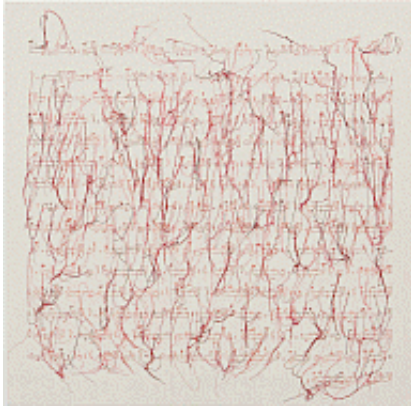


Special Exhibition
EL57.33

The Definition of the Word Security in Arabic
2007

Embroidery and gel medium on canvas
36 x 36 in. (91.4 x 91.4 cm)
Collection of the artist

Brooklyn Museum



Special Exhibition
EL57.34

The Definition of the Word Love in Arabic
2007

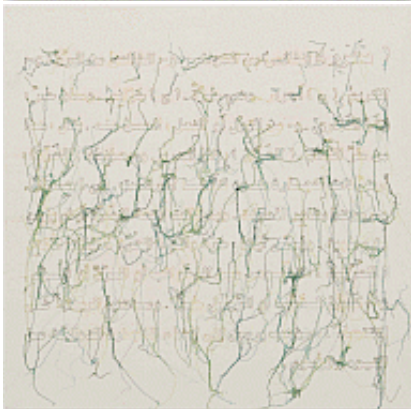
Embroidery and gel medium on canvas
36 x 36 in. (91.4 x 91.4 cm)
Collection of the artist



Special Exhibition
EL57.35

The Definition of the Word Peace in Arabic
2007

Embroidery and gel medium on canvas
36 x 36 in. (91.4 x 91.4 cm)
Collection of the artist



Special Exhibition
EL57.36

The Definition of the Word Freedom in Arabic
2007

Embroidery and gel medium on canvas
36 x 36 in. (91.4 x 91.4 cm)
Collection of the artist



Special Exhibition
EL57.37

Borqa'
1997

Satin, lace, and jade pearls
(not including plexi box for installation): 31 3/4 x 27 3/4 in. (80.6 x 70.5 cm)
Collection of the artist

Brooklyn Museum



Special Exhibition
EL57.38

The Reign of Terror
2007-2008

Wallpaper
168 x 180 in. (426.7 x 457.2 cm)



Special Exhibition
EL57.39a-e

The Reign of Terror
2005

Paper products, various
various
Collection of the artist



Special Exhibition
EL57.40

The Reign of Terror
2005

Photograph
5 x 7 in. (12.7 x 17.8 cm)
Collection of the artist



Special Exhibition
EL57.41

The Reign of Terror
2005

Photograph
5 x 7 in. (12.7 x 17.8 cm)
Collection of the artist

Brooklyn Museum



Special Exhibition
EL57.42

I Love Paris
1991

Photograph
Framed: 16 x 22 in. (40.6 x 55.9 cm)
Collection of the artist



Special Exhibition
EL57.43

I Love Paris
1991

Photograph
Other (Framed): 16 x 22 in. (40.6 x 55.9 cm)
Collection of the artist

Special Exhibition
EL57.44

I Love Paris
1991

Photograph
Framed: 16 x 22 in. (40.6 x 55.9 cm)
Collection of the artist



Special Exhibition
EL57.45

Peace Garden, Miami, FL
2002

Photograph
Framed: 18 x 24 in. (45.7 x 61 cm)
Collection of the artist

Brooklyn Museum



Special Exhibition
EL57.46

Peace Garden, Miami, FL
2002

Photograph
18 x 24 in. (45.7 x 61 cm)
Collection of the artist



Special Exhibition
EL57.47

Peace Garden, Miami, FL
2002

Photograph
18 x 24 in. (45.7 x 61 cm)
Collection of the artist



Special Exhibition
EL57.48a-f

6 Chinese Proverbs, Panama City
2003

Photograph
Other (Each): 18 x 24 in. (45.7 x 61 cm)
Collection of the artist



Special Exhibition
EL57.49a-f

6 Chinese Proverbs, Panama City
2003

Photograph
Other (Each): 18 x 24 in. (45.7 x 61 cm)
Collection of the artist

Brooklyn Museum



Special Exhibition
EL57.50a-f

6 Chinese Proverbs, Panama City
2003

Photograph
Other (Each): 18 x 24 in. (45.7 x 61 cm)
Collection of the artist



Special Exhibition
EL57.51a-f

6 Chinese Proverbs, Panama City
2003

Photograph
Other (Each): 18 x 24 in. (45.7 x 61 cm)
Collection of the artist



Special Exhibition
EL57.52

Today 70% Of The Poor In The World Are Women, Barcelona
2001

Photograph
18 x 24 in. (45.7 x 61 cm)
Collection of the artist



Special Exhibition
EL57.53

Today 70% Of The Poor In The World Are Women, Barcelona
2001

Photograph
18 x 24 in. (45.7 x 61 cm)
Collection of the artist

Brooklyn Museum



Special Exhibition
EL57.54

Today 70% Of The Poor In The World Are Women, Barcelona
2001

Photograph
9 x 12 in. (22.9 x 30.5 cm)
Collection of the artist



Special Exhibition
EL57.55

Today 70% Of The Poor In The World Are Women, Barcelona
2001

Photograph
9 x 12 in. (22.9 x 30.5 cm)
Collection of the artist



Special Exhibition
EL57.56

Today 70% Of The Poor In The World Are Women, Barcelona
2001

Photograph
9 x 12 in. (22.9 x 30.5 cm)
Collection of the artist



Special Exhibition
EL57.57

Today 70% Of The Poor In The World Are Women, Barcelona
2001

Photograph
9 x 12 in. (22.9 x 30.5 cm)
Collection of the artist

Brooklyn Museum



Special Exhibition
EL57.58

Today 70% Of The Poor In The World Are Women, Barcelona
2001

Photograph
9 x 12 in. (22.9 x 30.5 cm)
Collection of the artist

Special Exhibition
EL57.59

Today 70% Of The Poor In The World Are Women, Barcelona
2001

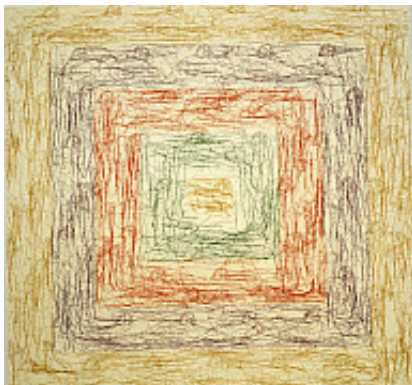
Photograph
9 x 12 in. (22.9 x 30.5 cm)
Collection of the artist



Special Exhibition
EL57.60

Mosaic Memory of Tongues - RFGA
2007

Acrylic, embroidery, and gel medium on canvas
72 x 79 in. (182.9 x 200.7 cm)
Collection of the artist



Special Exhibition
EL57.61

The New Albers
2002

Acrylic, embroidery and gel medium on canvas
70 x 72 in. (177.8 x 182.9 cm)
Collection of the artist

Brooklyn Museum

Special Exhibition

EL57.62

Ghada Amer, Born 1963 in Cairo, Egypt

Grey Wallpaper (from Greg's Group)

2001

Colored pencil and embroidery on monoprint

Sheet: 18 1/2 x 15 1/4 in. (47 x 38.7 cm)

Collection of Greg Miller

