

# ***Pharaohs, Queens and Goddesses***

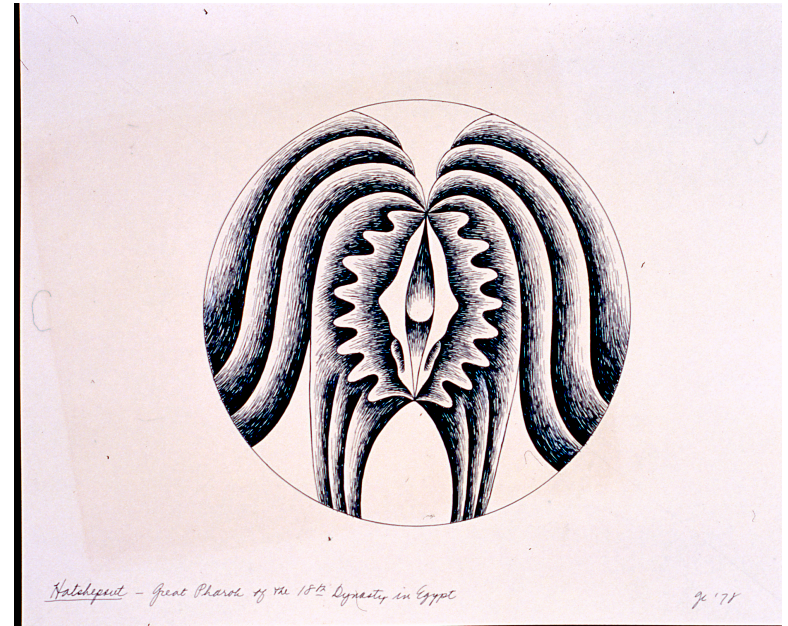
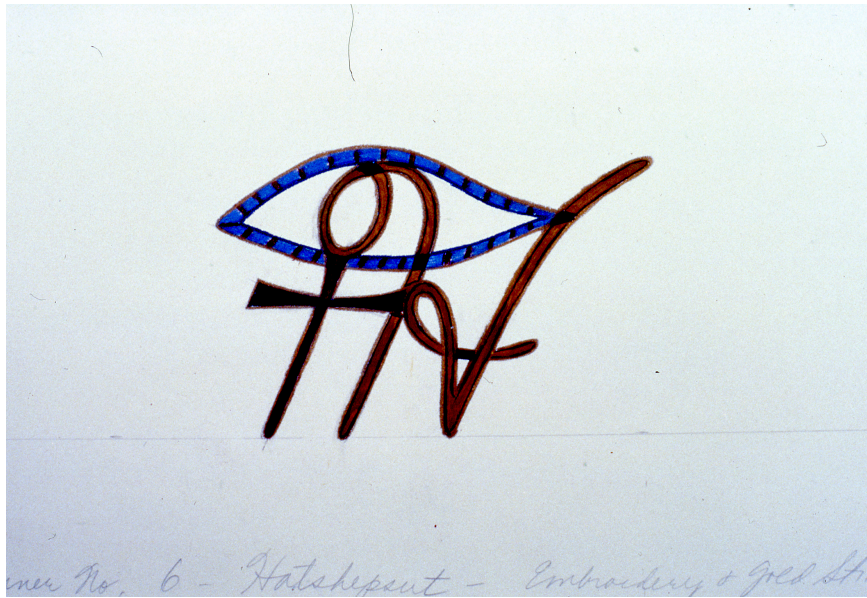
Biographical Gallery  
Elizabeth A. Sackler Center for Feminist Art

March 2007 – September 2007

Co-Curated by Maura Reilly and Edward Bleiberg



Plate for Hatshepsut place setting at Judy Chicago's *The Dinner Party*, 1974-1979. The test plate for Hatshepsut, which is similar in appearance to the final plate seen above, is included in *Pharaohs, Queens and Goddesses* courtesy of Sivia Sherwood.



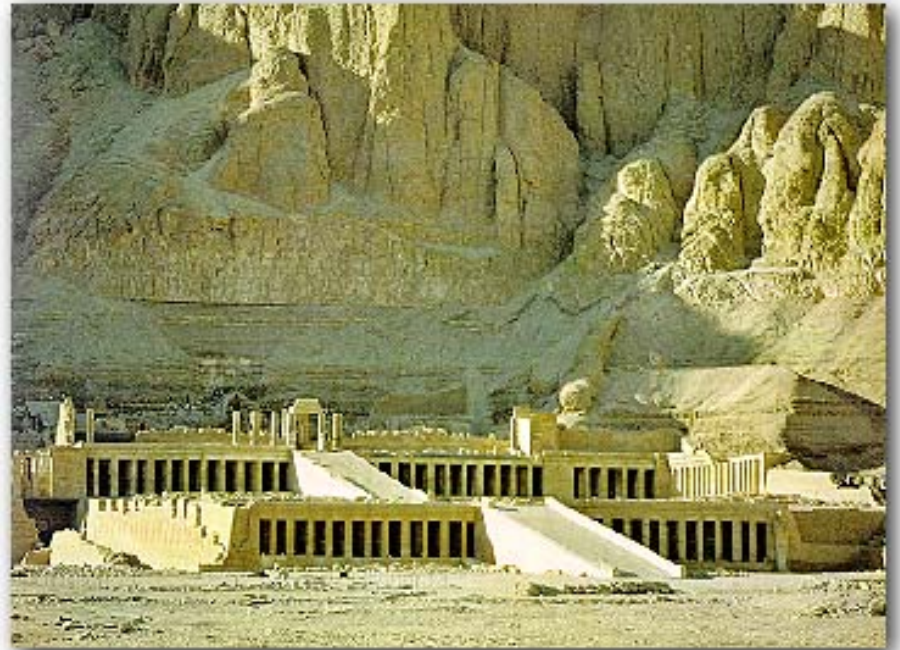
Process drawings from Judy Chicago's personal archives. Above left is sketch of Hatshesut's illuminated "H" found on her table runner at *The Dinner Party*. Above right is a sketch for Hatshepsut's plate.



# Hatshepsut



Head of Hatshepsut or Thutmose III,  
1478—1425 BC. Collection of the  
Brooklyn Museum.



Hatshepsut's temple at Deir el Bahri



# Nefertiti

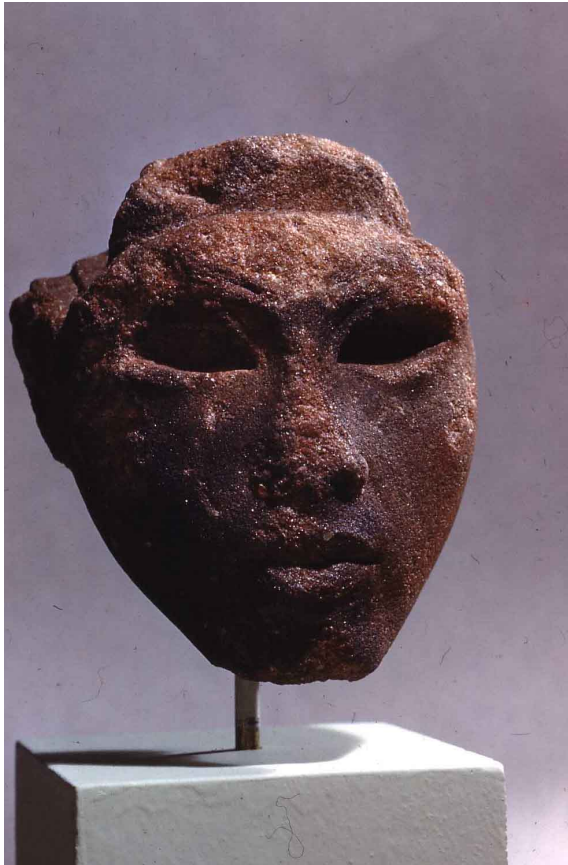


Queen Nefertiti in Flat-topped Crown  
Amarna Period, 1352–1336 BC.  
Collection of the Brooklyn Museum.



Queen Nefertiti Makes Offerings and Receives Life  
Amarna Period, 1352–1336 BC. Collection of the  
Brooklyn Museum.

## Queens Tiy + Cleopatra



Queen Tiy, Mother-in-law of Nefertiti  
Amarna Period, 1352–1336 BC  
Collection of the Brooklyn Museum.

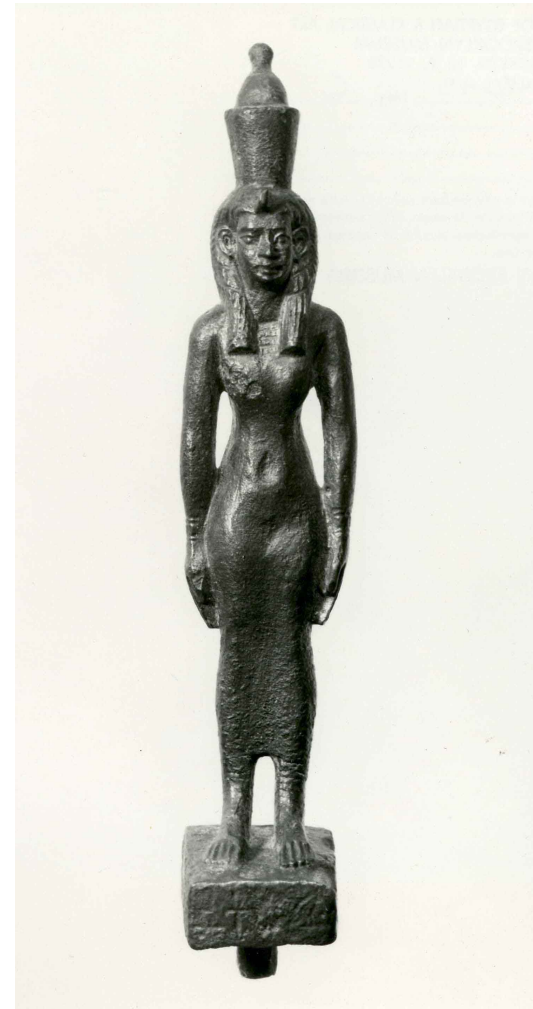


Cleopatra VII, Reign of Cleopatra VII, 48–31 BC  
Collection of the Brooklyn Museum.

# Goddess Sakhmet + Mut



The Goddess Sakhmet Late Period, 664—332 BC  
Collection of the Brooklyn Museum.



The Goddess Mut Late Period, 664—332 BC  
Collection of the Brooklyn Museum.



## Isis + Hathor

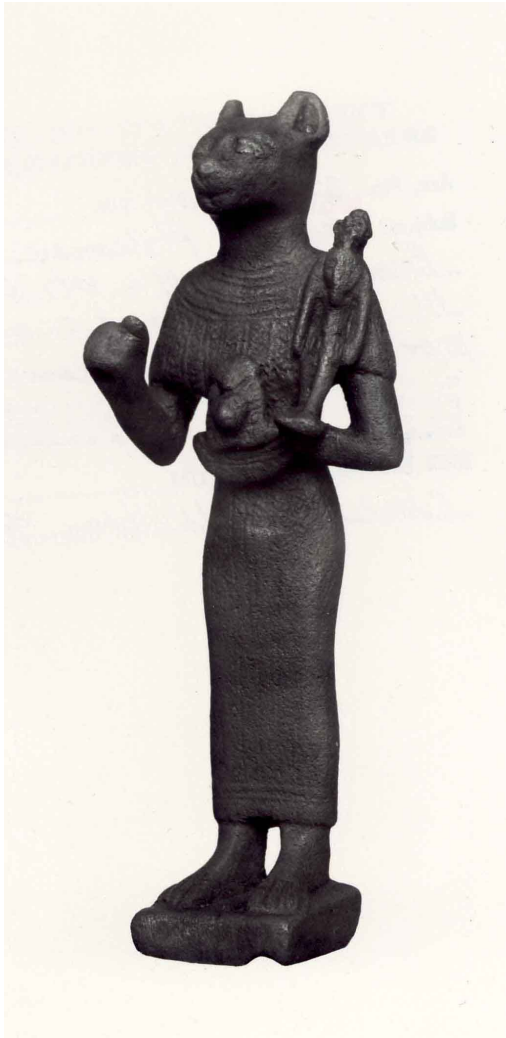


The Goddess Isis and Horus the Child  
Late Period, 664—332 BC  
Collection of the Brooklyn Museum.

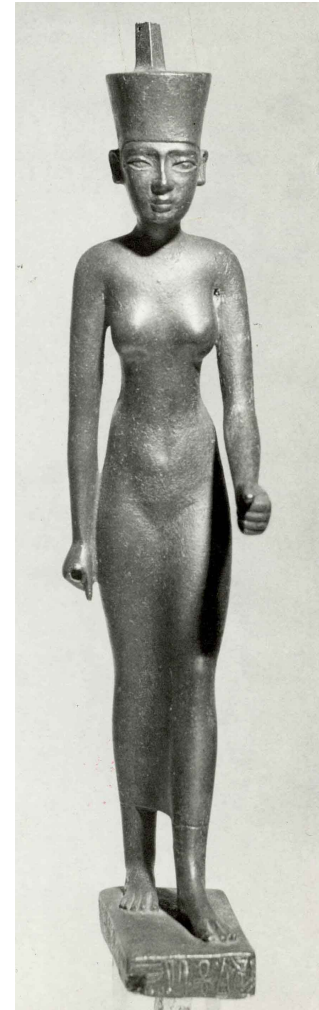


Sistrum with the Goddess Hathor  
Late Period, 664—332 BC  
Collection of the Brooklyn Museum.

## Bastet + Neith



The Goddess Bastet Late Period, 664—332 BC  
Collection of the Brooklyn Museum.



The Goddess Neith Late Period, 664—332 BC  
Collection of the Brooklyn Museum.